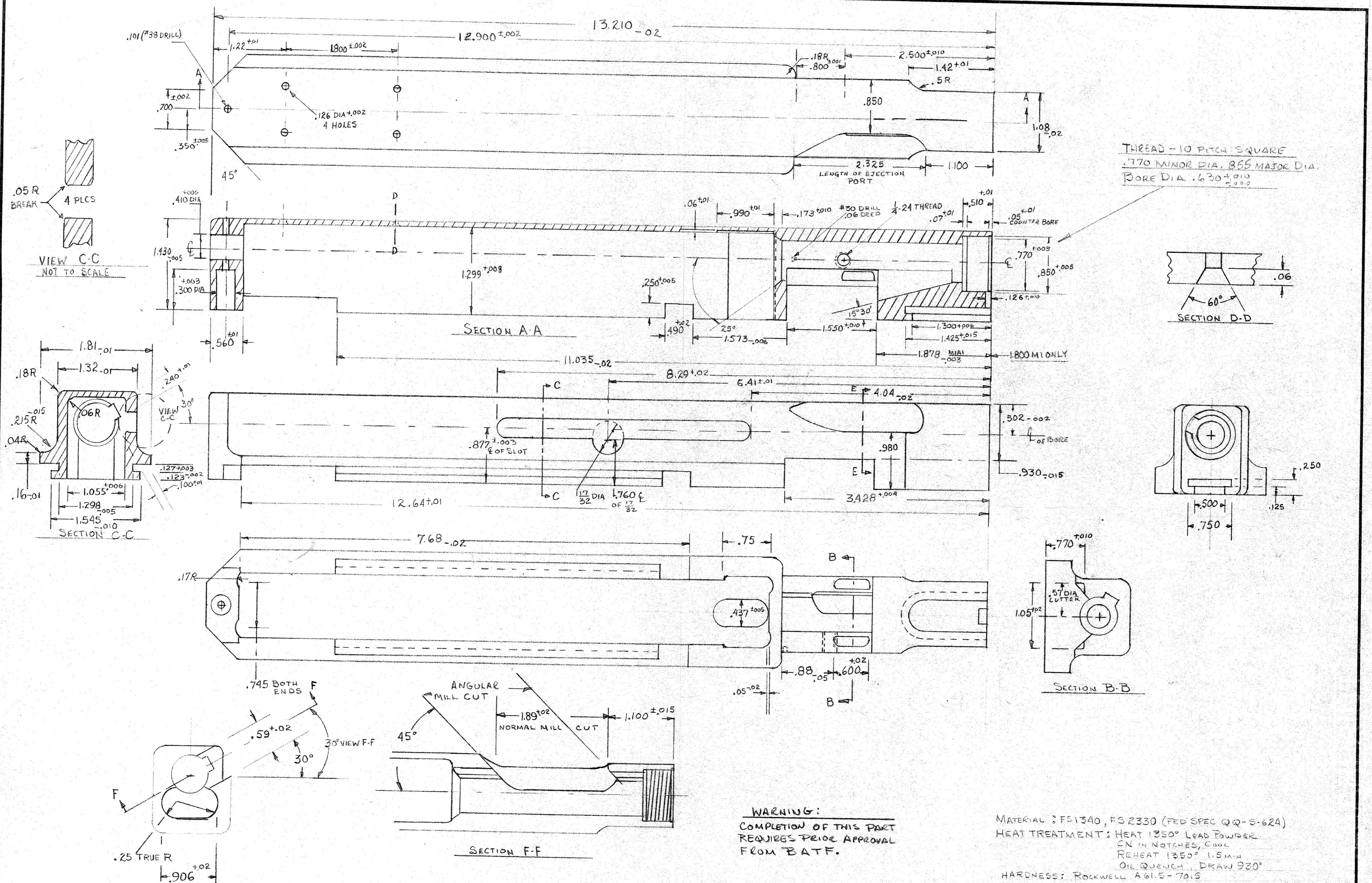




Thompson M1A1 SMG



THREAD - 10 PITCH SQUARE  
 .770 MINOR DIA, .855 MAJOR DIA.  
 BORE DIA. .630 ± .010

MATERIAL: FS1340, FS2330 (FED SPEC QQ-S-624)  
 HEAT TREATMENT: HEAT 1350° LEAD POWDER  
 CN IN NOTCHES, COOL  
 REHEAT 1350° 1.5 MIN  
 OIL QUENCH, DRAW 930°  
 HARDNESS: ROCKWELL A61.5-70.5  
 FINISH: TYPE II CLASS A (SPEC. USA 67-0-2)

**WARNING:**  
 COMPLETION OF THIS PART  
 REQUIRES PRIOR APPROVAL  
 FROM B.A.T.F.

This drawing may be  
 downloaded free of charge from  
<http://www.josreichert.com>. It is  
 provided by Joseph Reichert,  
 d/b/a/ Reichert Büchsenmacher  
 (RB).

TOLERANCES (EXCEPT AS NOTED)	REVISIONS		
	NO.	DATE	BY
DECIMAL	1		
±	2		
FRACTIONAL	3		
±	4		
ANGULAR	5		
±	6		

THOMPSON SUBMACHINE GUN  
 RECEIVER, MODEL M1A1

MATERIAL  
 1018-4130  
 DRAWING NUMBER  
 D6535523

